

Brussels Valley

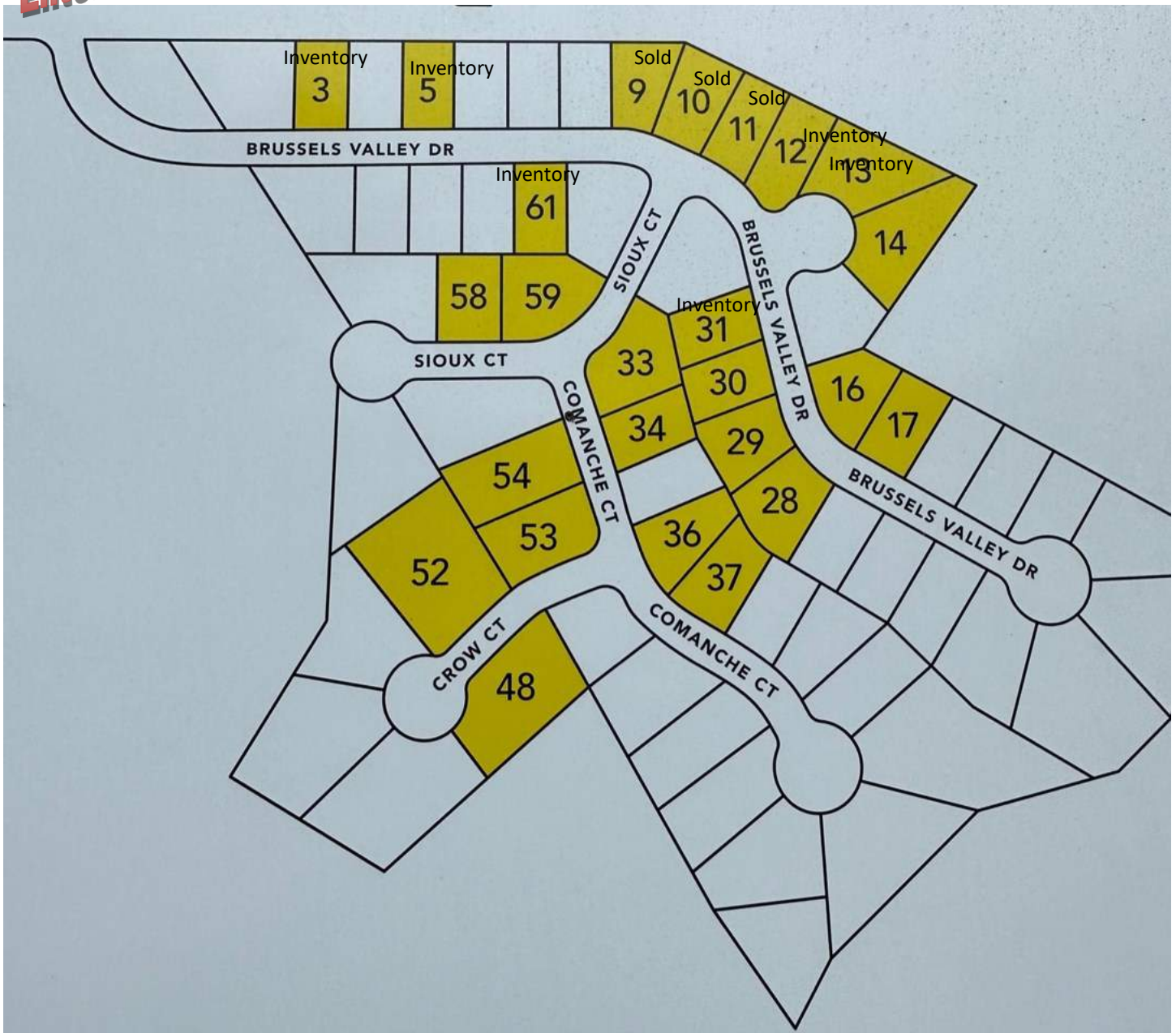
WWW.MYERSSELECTHOMES.COM



Presented By:



Enter Here



**** Lots in yellow are Myers Select Homes Lots**

With Myers Select Homes You Get More Standard Features For Your Money Without Paying Extra

- Maintenance-free Vinyl Siding with 2 panel Vinyl Shutters
- 30 Year Limited Warranty Architectural Shingles with Ridge Vent
- Pre-engineered Roof Truss System and Durastrand Point Six Subfloor
- Building wrap— Air Infiltration and Moisture Barrier
- Sliding door in Kitchen/ Dining leading to 8X8 patio— Varies per plan and lot
- Windsor ND Classic Series Windows— Double Glazing, Tilt, Argon, with screens
- 2 Car garage with Garage Door Opener with Key Pad Access
- Cabinet Package available in White or Color Options
- Some Vaulted Ceilings
- Recessed Lighting in Kitchen and Front Porch
- 200 AMP electric service
- Brushed Nickel Hardware, Upgraded doors, and Light Fixtures
- Ceiling Fans in Master and Great Room
- Ceiling Lights Braced and Double Switched for Future Ceiling fans in 2nd and 3rd Bedrooms
- Whirlpool (Almana) Electric appliances, Smooth top stove, Microwave and Dishwasher
- Garbage Disposal with Switch
- Sump Pump Installed & Plumbed to Exterior of Home
- Efficient Electric HVAC system with Digital Thermostat
- Electric Smoke Detectors with Battery Back Up
- Exhaust Fans in Every Bathroom
- Bathroom Rough in Lower Level (subject to location)
- Egress window for all Ingrade Basements
- Access to Builder Trend App to follow progress on your home

More Options and Upgrades Available Upon Request

BLUFFWOOD A

Base Price

\$255,000.00

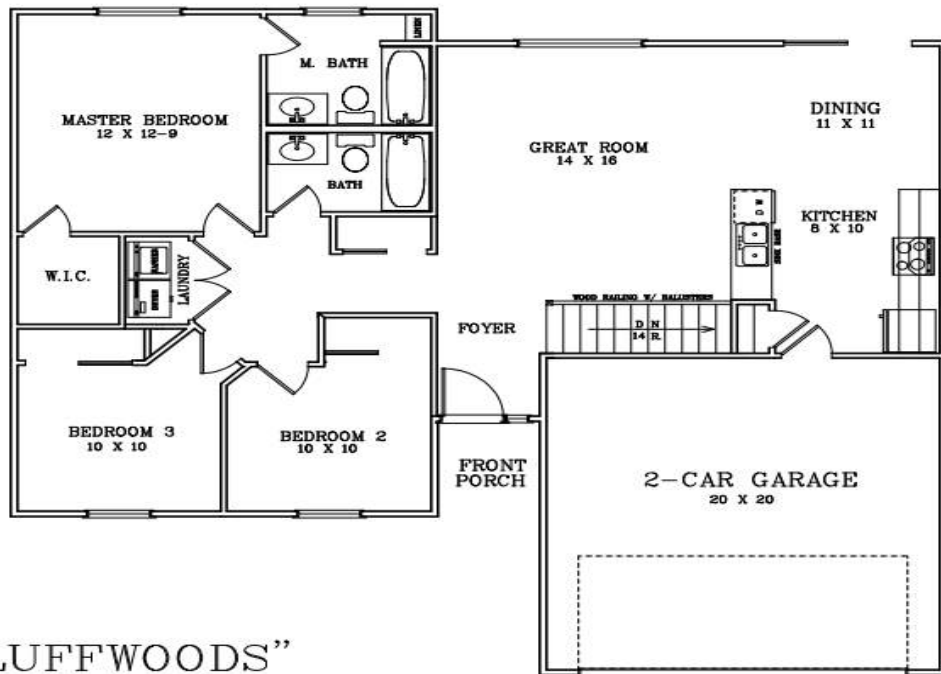


**** Base Price does not include glass in garage door**

BLUFFWOOD B

Base Price:

\$259,000.00



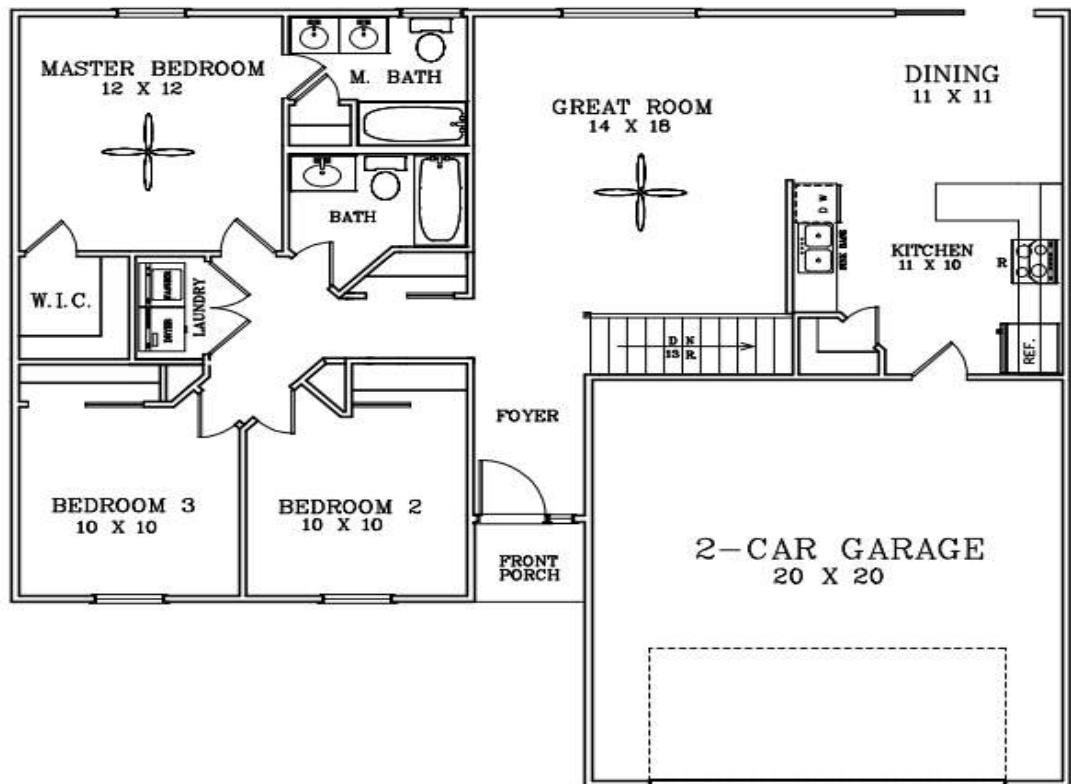
THE "BLUFFWOODS"
FLOOR PLAN 1200 SQ. FT.

** Base Price does not include stone, shake, or glass garage door

RIVERSIDE A

Base Price:

\$264,000.00



THE "RIVERSIDE"
FLOOR PLAN 1255 SQ. FT.

RIVERSIDE B

Base Price:

\$269,000.00

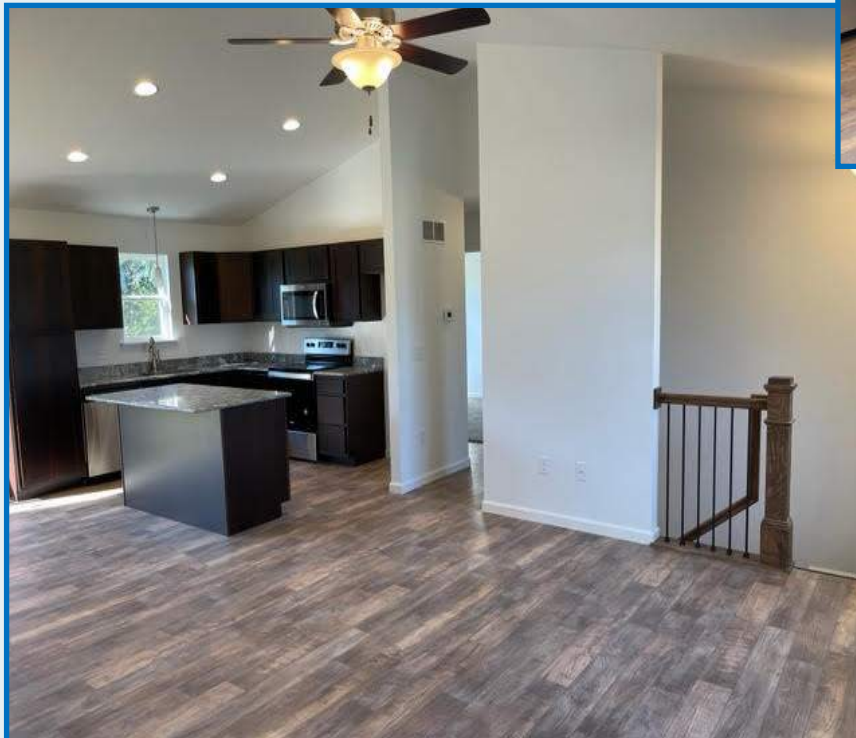


** Base Price does not include 3rd Car Garage, Stone, Shake or Glass in Garage Door

ISABELLE A

Base Price:
\$275,000.00

** Base Price does not include stone, shake, or glass in garage door

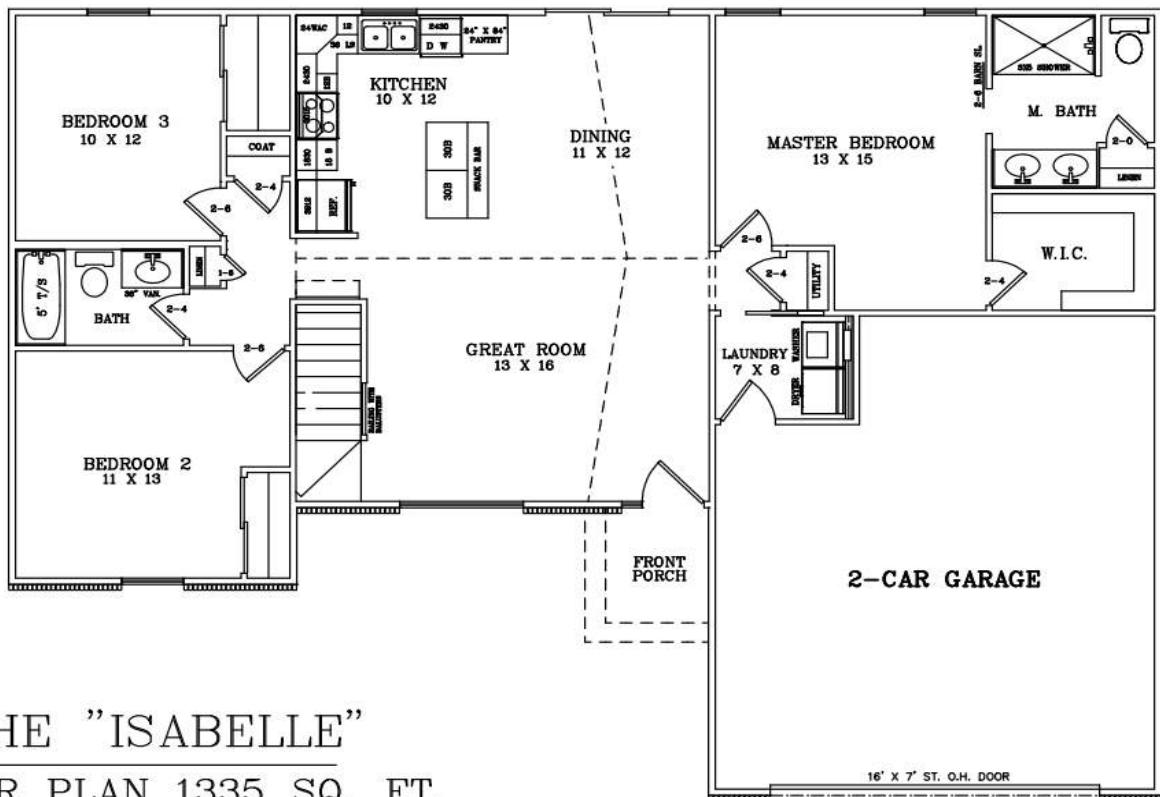


ISABELLE B

Base Price:

\$279,000.00

** Base Price does not include 3rd Car Garage or Stone



THE "ISABELLE"
FLOOR PLAN 1335 SQ. FT.

CLEARWATER A

Base Price

A- \$285,000.00

** Base Price does not include Stone, Shake, or Glass in Garage Door



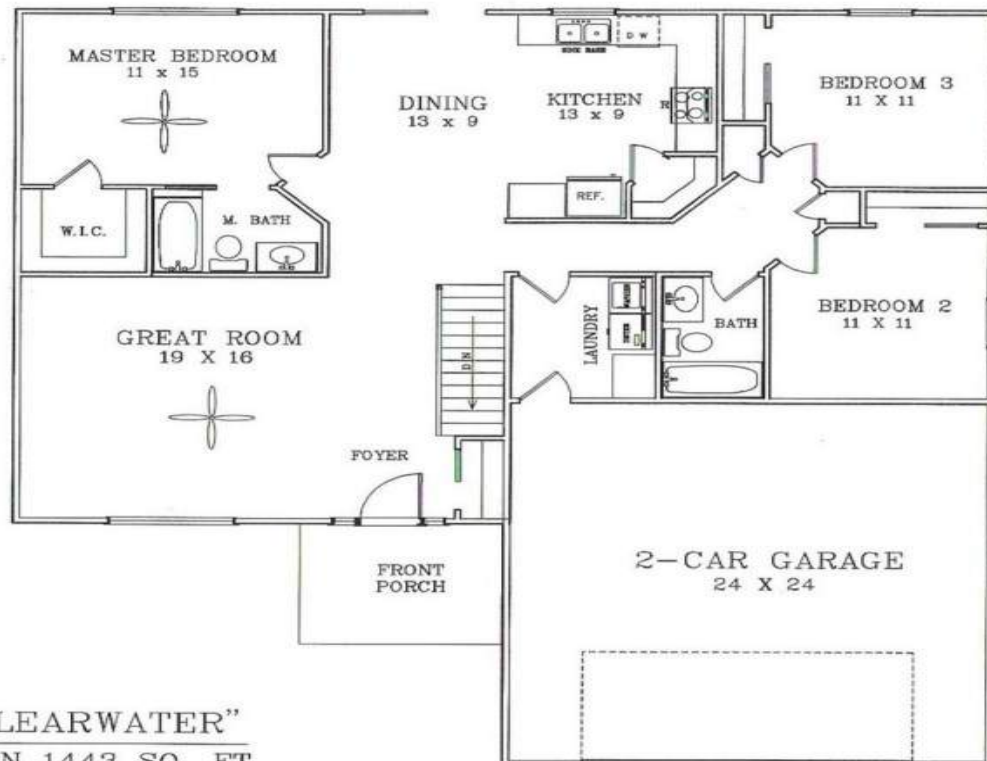
CLEARWATER B

Base Price

A- \$290,000.00



**** Base Price does not include Stone or Shake**



THE "CLEARWATER"
FLOOR PLAN 1443 SQ. FT.

For pricing, lot availability and
restrictions call:



Office: 636-528-4228

Rachel Myers Cell: 636-290-8992

**For more information about these homes
and inventory go to:**

www.myersselecthomes.com